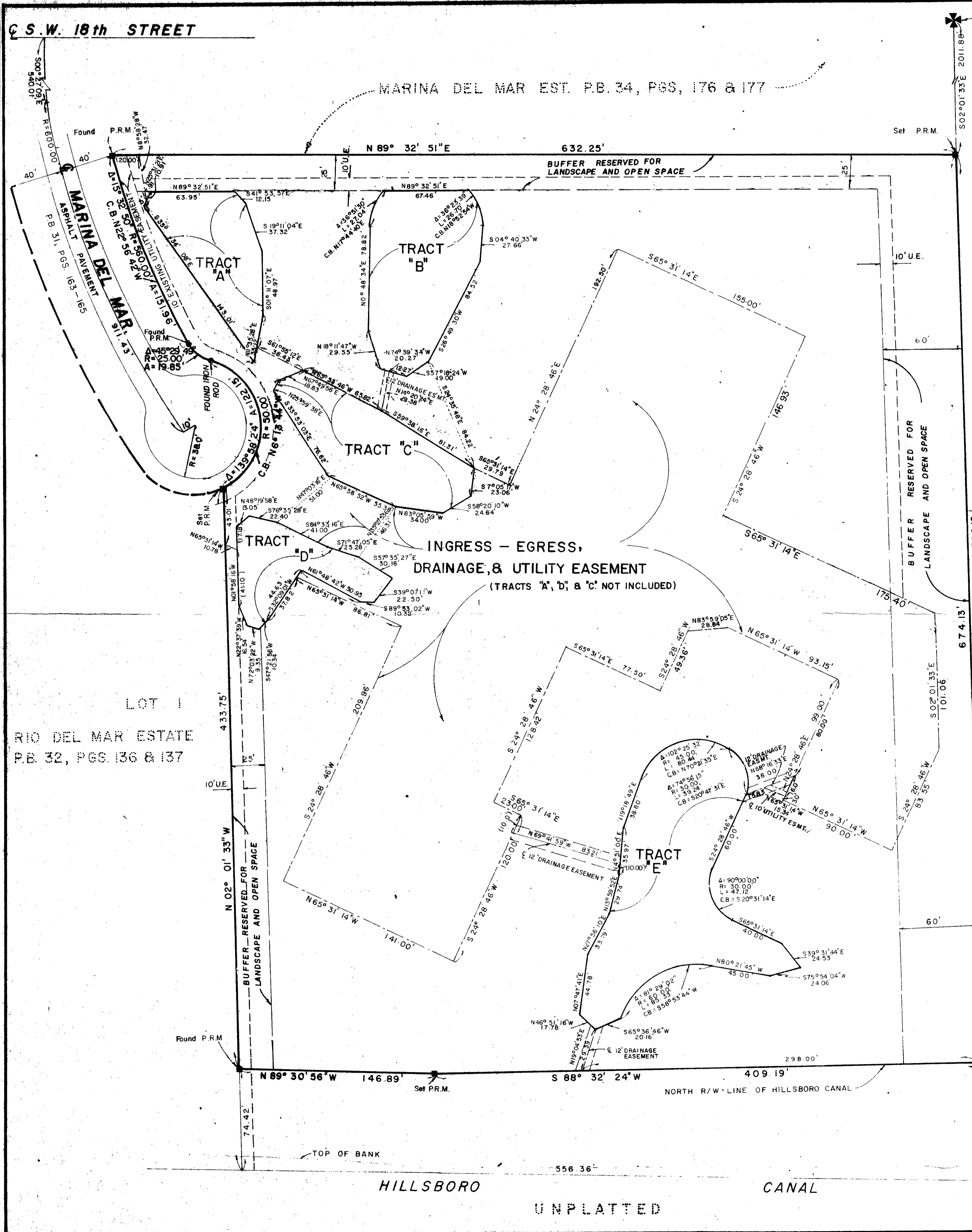


DRAWING NUMBER
51/17

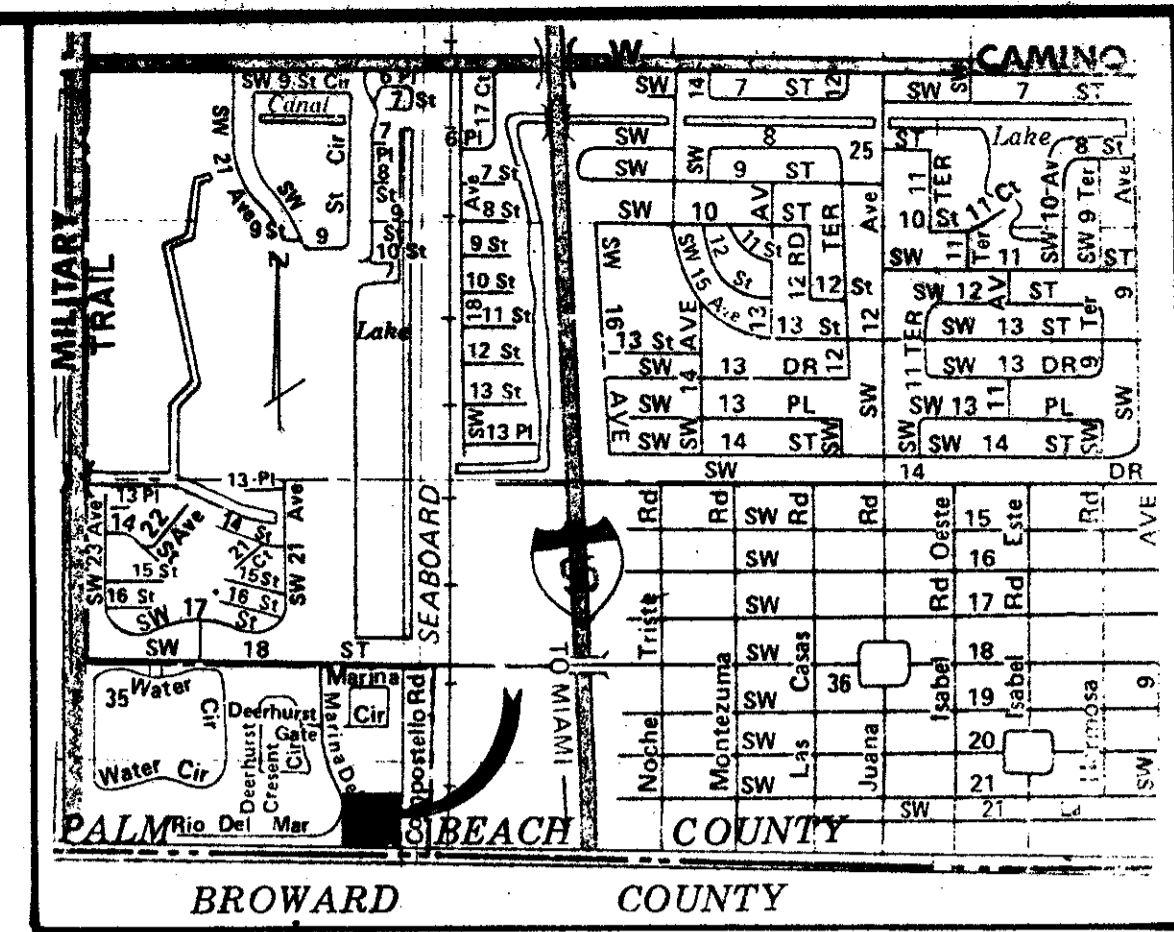
DRAWING NUMBER

DRAWING NUMBER

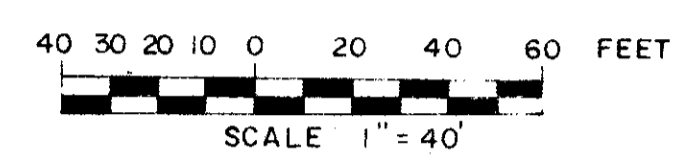
DRAWING NUMBER



NE CORNER OF SECTION 35,
TWP. 47 S., RNG. 42 E



LOCATION MAP
NOT TO SCALE



SCALE 1" = 40'
FEBRUARY, 1985
SHEET 2 OF 2 SHEETS

PLAT OF HEATHERWOOD

BEING A RE-PLAT OF TRACT 81
OF THE PLAT OF BOCA DEL MAR NO.10
AS RECORDED IN PLAT BOOK 31, PAGES 163-165,
AND LYING IN SECTION 35, TOWNSHIP 47 SOUTH.,
RANGE 42 EAST; PALM BEACH COUNTY, FLORIDA.

BEARING BASE
THE NORTH LINE OF TRACT 81 IS TAKEN AS BEING
N 89°-32'-51" E AND ALL OTHER BEARINGS ARE RELATIVE
THERE TO.

- RESERVATIONS**
- A. NO BUILDINGS OR ANY KIND OF CONSTRUCTION SHALL BE PLACED ON DRAINAGE EASEMENTS.
 - B. NO STRUCTURES, TREES OR SHRUBS SHALL BE PLACED ON DRAINAGE EASEMENTS.
 - C. APPROVAL OF LANDSCAPING ON UTILITY EASEMENTS SHALL BE ONLY WITH THE APPROVAL OF ALL UTILITIES OCCUPYING SAME.
 - D. WHERE DRAINAGE AND UTILITY EASEMENTS CROSS, DRAINAGE EASEMENTS SHALL TAKE PRECEDENT.
 - E. BUILDING SETBACK LINES SHALL BE AS REQUIRED BY PALM BEACH COUNTY ZONING REGULATIONS.

NOTE
TRACTS "A", "B", "C", & "D" ARE NOT A PART OF THE INGRESS - EGRESS DRAINAGE AND UTILITY EASEMENT AS SHOWN HEREON.

- LEGEND**
- C.B. - DENOTES CHORD BEARING
 - P.R.M. - DENOTES PERMANENT REFERENCE MONUMENT
 - UE - DENOTES UTILITY EASEMENT

UNPLATTED

EAST 1/4 CORNER OF SECTION 35/47/42

HEATHERWOOD
0205329 51/17
SHALLOWAY
TELEPHONE 306/560-7622 320 N. DUNE HIGHWAY LAKE WORTH FL 33404